



Mobile Flex

2-post system

4-post system

User manual

Important information

Please read this user manual carefully before using the product!

This user manual is intended as a guide for caregivers and other users, as well as technical personnel during servicing and maintenance the product.

Date: 06-09-2023

Ver: 6



Scan the QR code for more information

CONTENTS

1. PURPOSE AND SAFETY	4
1.1 Purpose	4
1.2 Safety instructions	4
1.3 Check before use	5
1.4 Transport	5
2. MOBILE FLEX - 2-POST SYSTEM	5
2.1 Terminology	5
2.2 Unpacking	5
2.3 Assembly instructions	6
2.4 Technical specifications and dimensions	7
3. MOBILE FLEX - 4-POST SYSTEM	8
3.1 Terminology	8
3.2 Unpacking	9
3.3 Assembly instructions	9
3.4 Technical specifications and dimensions	11
4. USE AND ADJUSTMENT	12
4.1 Using the Mobile Flex	12
4.2 Adjusting the Mobile Flex	12
5. MAINTENANCE	13
5.1 Cleaning	13
5.2 Storage	13
6. CHECK AND TROUBLE SHOOTING	13
6.1 Annual check	13
6.2 Trouble Shooting	13
7. ENVIRONMENT AND QUALITY	14
7.1 Disposal	14
7.2 Quality	14
7.3 Symbols and abbreviations	14
8. ACCESSORIES	15

1. PURPOSE AND SAFETY

1.1 Purpose

The modular system, Mobile Flex, can be configured in various ways meeting individual needs. It is possible to configure a 2-post system with wheels and a 4-post system on feet. The system covers several spans. Depending on the choice of model, extends the range from 2 to 3 meters or 3 to 4 meters.

- Mobile Flex is designed to lift and move patients from one point to another in institutions such as nursing homes, hospitals, community centres and private homes.
- Mobile Flex is ideal when it is not possible to install a stationary rail system or if a temporary solution is required.
- Mobile Flex is approved for use with Luna ceiling hoist with a maximum load of 275 kg.

NOTE: All models are described in this manual. Illustrations and descriptions are applicable to all models, unless a separate description is provided.

NOTE: Do not use the Mobile Flex for purposes other than originally intended.

1.2 Safety instructions



Important – warning!

Read the user manual and these safety instructions thoroughly before using the Mobile Flex:

- All parts must be properly installed according to this manual.
- NEVER use Mobile Flex if there is suspicion of any defect (abnormal sound, loose brackets etc.) In such cases, it is important to find the cause and to take Mobile Flex out of service and your dealer or Winncare Nordic ApS contacted.
- Mobile Flex max capacity is 275 kg and must never be exceeded.
- Ensure that neither carers/helpers nor patients/users can be hurt during the lifting.
- Mobile Flex may not be moved or adjusted when a patient is being transferred from one point to another
- Ensure the user cannot be squeezed or restricted in movement.
- It is the carer who is responsible for the safety and for ensuring that the product is used correctly. See 1.3 - *Check before use*.

1.3 Check before use

The carer is responsible for ensuring that the Mobile Flex is checked before used, including the following:

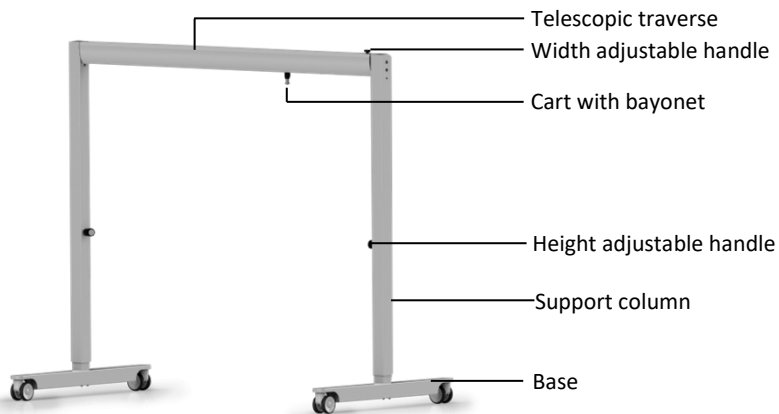
- 1) Personnel have received qualified instruction in using Mobile Flex.
- 2) Check that the Mobile Flex is complete and no parts are missing.
- 3) Check that there are no signs of corrosion, wear and tear or other defects. If there is any sign of a defect the Mobile Flex must be taken out of use immediately.
- 4) If in any doubt concerning the use of Mobile Flex contact Winncare Nordic ApS for advice and guidance.

1.4 Transport

Winncare Nordic ApS recommends that Mobile Flex is transported using the original packaging.

2. MOBILE FLEX - 2-POST SYSTEM

2.1 Terminology



2.2 Unpacking

Make sure no parts are missing or damaged. Any suspicion of damage or shortage should be reported to your dealer or Winncare Nordic ApS.

The 2-pos system is delivered in 5 boxes. The boxes content as following:

Box 1 (Fig. 2.2A):

- Telescopic traverse with cart for Luna ceiling hoist with connecting with bayonet.
- Use manual



Fig. 2.2A

Box 2 (Fig. 2.2B):

- 2 boxes each with a support column



Fig. 2.2B

Box 3 (Fig. 2.2C):

- 2 boxes each with a base with wheels

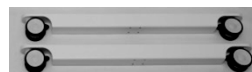


Fig. 2.2C

Note! We recommend that the packaging is kept if the system is to be packed for storage or transport.

2.3 Assembly instructions



Due to heavy parts Winncare Nordic ApS recommends that Mobile Flex is assembled by two persons.

Follow the assembly instruction step by step:

- 1) Place the support columns on the floor with the traverse between the columns.
- 2) Turn the support columns as the 2 holes facing against the traverse. (Fig. 2.3A).
- 3) Connect the support columns with the traverse by screwing the 2 x M10 screws (Fig. 2.3B). This should be done on both sides.

Note: For pos. 2 and 3 ensure that the screws are screwed tightly; otherwise the 2-post system will be unstable and not safe to use.



Fig. 2.3A



Fig. 2.3B

- 4) Lift the support column and connect the base (Fig. 2.3C).

Finish first one side.



Fig. 2.3C

- 5) Tighten the 4 x M8 screws under the base (Fig. 2.3D). Repeat at the opposite side.

- 6) Raise the 2-post system.
It can be an advantage to lock the wheels.



Fig. 2.3D

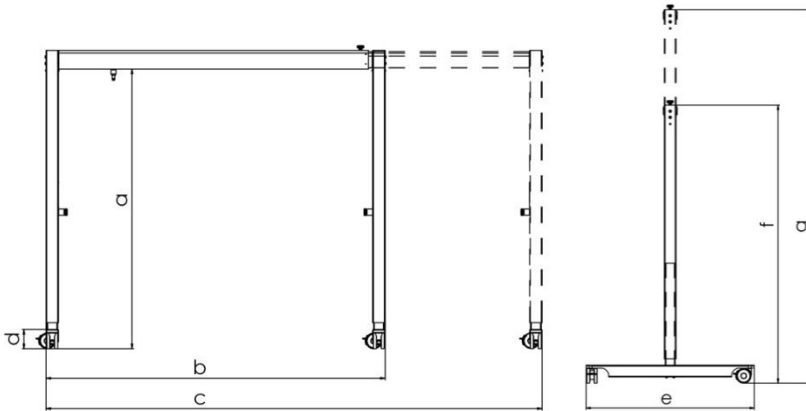
2.4 Technical specifications and dimensions

Specifications:

Weight:

Complete Mobile Flex 3000:	88 kg
Complete Mobile Flex 4000:	98 kg
Traverse 3000 (3 meter):	28 kg
Traverse 4000 (4 meter):	38 kg
Support column:	18 kg
Base with wheels:	12 kg

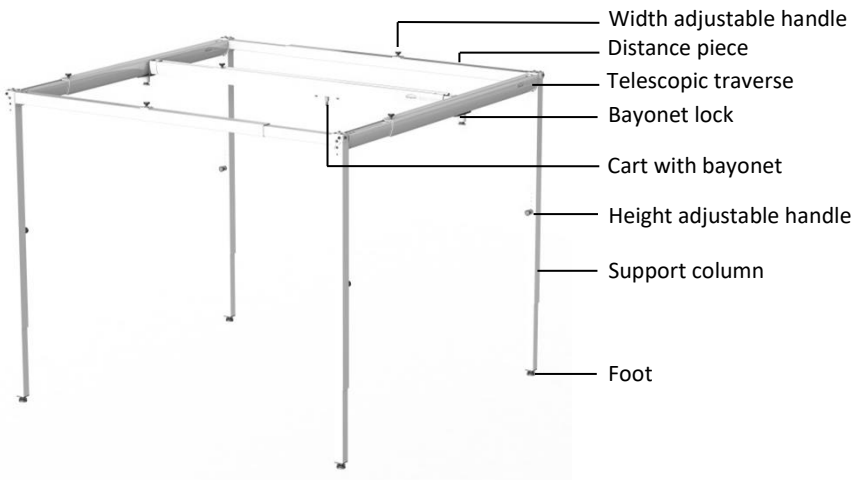
Dimensions:



	Mobile Flex 3000	Mobile Flex 4000
a	1775 mm	1775 mm
b	2160 mm	3160 mm
c	3160 mm	4160 mm
d	120 mm	120 mm
e	1150 mm	1150 mm
f	1890 mm	1890mm
g	2540 mm	2540 mm
Max. load	275 kg	275 kg

3. MOBILE FLEX - 4-POST SYSTEM

3.1 Terminology



3.2 Unpacking

Make sure no parts are missing or damaged. Any suspicion of damage or shortage should be reported to your dealer or Winncare Nordic ApS .The 4-post system can be combined depending on the model. See combinations in chapter 3.4 - “Specifications”, and the number of applied parts.

Content of the boxes:

Box 1 (Fig. 3.2A):

- Telescopic traverse with cart for Luna ceiling hoist with bayonet connection.
- User manual



Fig. 3.2A

Box 2 (Fig. 3.2B):

- 4 boxes each with a support column



Fig. 3.2B

Box 4 (Fig. 3.2C):

- Distance piece



Fig. 3.2C

Box 5 (Fig. 3.2D):

- 2 x end bracket, 2 x bayonet lock and 4 x adjustable device for support column.



Fig. 3.2D

3.3 Assembly instructions



Due to heavy parts Winncare Nordic ApS recommends that Mobile Flex is assembled by two persons.

Follow the assembly instruction step by step:

- 1) Place 2 of the support columns on the floor with the traverse between the columns.
- 2) Turn the support columns as the 2 holes facing against the traverse. (Fig. 3.3A).
- 3) Connect the support columns with the traverse by screwing the 2 x M10 screws (Fig. 3.3B). This should be done on both sides.

Note: For pos. 2 and 3 ensure that the screws are screwed tightly, otherwise the 4-post system will be unstable and not safe to use.

Note: Repeat pos. 1 - 3 at the opposite side.



Fig. 3.3A



Fig. 3.3B

- 4) Screw the foot on the support column with the 4 x M8 screws.
Ensure that the screws are fully screwed (Fig. 3.3C).
Repeat this on all 4 support columns.

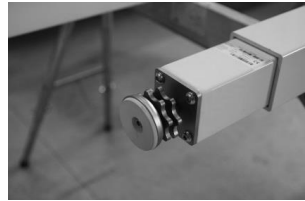


Fig. 3.3C

- 5) Set up the two sides with the traverses opposite each other and support them etc. against a wall (Fig. 3.3D).



Fig. 3.3D

- 6) Mount the distance piece between the two ends (Fig. 3.3E) and tighten the 4 x M10 screws (Fig. 3.3F).



Fig. 3.3E



Fig. 3.3F

- 7) Mount in both ends on traverse the end bracket.

- 8) Lift the traverse, so that the end bracket led up to the bayonet bracket (Fig. 3.3G).



Fig. 3.3G

- 9) Press up the bayonet lock until you can feel a resistance.
Turn the lock 90° clockwise until it clicks (Fig. 3.3H).



Fig. 3.3H

- 10) Turn the bayonet lock disk clockwise until the traverse bracket and cart are clamped together (Fig 3.31, point A)

Note: Make sure that the cart is correctly placed in the traverse bracket (Fig. 3.31, point B).

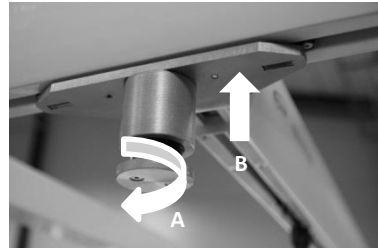


Fig. 3.31

3.4 Technical specifications and dimensions

Specifications:

<i>Number of parts for each model</i>	Mobile Flex 3000/3	Mobile Flex 3000/4	Mobile Flex 4000/3	Mobile Flex 4000/4
Traverse 3000	x3	x2	x1	
Traverse 4000		x1	x2	x3
Distance piece 3000	x2		x2	
Distance piece 4000		x2		x2
Total weight	200 kg	220 kg	220 kg	240 kg

Weight on parts:

Traverse 3000 (3 meter): 28 kg

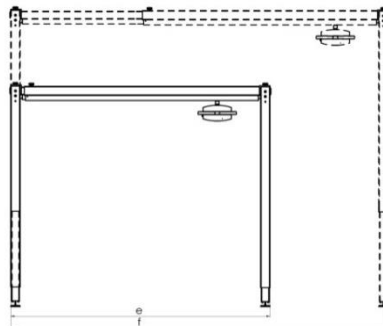
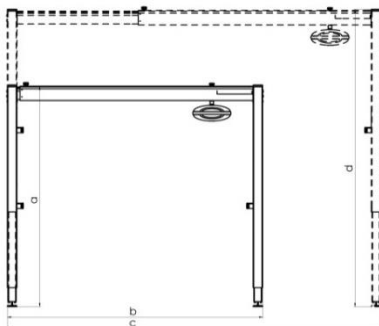
Traverse 4000 (4 meter): 38 kg

Distance piece 3000 (3 meter): 20 kg

Distance piece 4000 (4 meter): 25 kg

Support column: 19 kg

Dimensions:



	Mobile Flex 3000/3	Mobile Flex 3000/4	Mobile Flex 4000/3	Mobile Flex, 4000/4
a	1891 mm	1891 mm	1891 mm	1891 mm
b	2160 mm	2160 mm	3160 mm	3160 mm
c	3000 mm	3000 mm	4000 mm	4000 mm
d	2941 mm	2941 mm	2941 mm	2941 mm
e	2160 mm	3160 mm	2160 mm	3160 mm
f	3000 mm	4000 mm	3000 mm	4000 mm
Max. load	275 kg	275 kg	275 kg	275 kg

4. USE AND ADJUSTMENT

Mobile Flex can be used in wet environments, such as a bathroom.
Mobile Flex can be used outdoors.

4.1 Using the Mobile Flex

Mobile Flex should always be used together with Winncare Nordic ApS´s Luna ceiling hoist.

A cart with an attached bayonet is mounted on the traverse holding the Luna (Fig. 4.1A). Refer to the Luna user instructions for more information on the Luna ceiling hoist.



Fig. 4.1A

The following only applies for the 2-post system

The wheels must always be locked when the 2-post system is used.



Fig. 4.1B

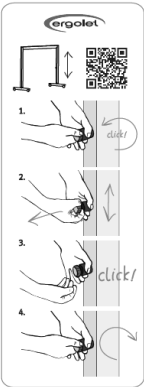
- Step on the pedal to activate the brake.

4.2 Adjusting the Mobile Flex

It is possible to adjust the height and the width of the Mobile Flex making it fit into different rooms/ surroundings.

Adjust the height (Fig. 4.2A)

- 1) To adjust the height, loosen the height adjustment handle. Turn the handle counterclockwise until a faint click is heard.
- 2) Pull out the handle and adjust the height to the desired position.
- 3) When the handle is released it is important that there will be a clear click to ensure that the height is adjusted and thus locked.



- 4) Tighten the adjusting handle by turning it clockwise.
- 5) The height is hereby adjusted and locked

Fig. 4.2A

Adjust the width:

To adjust the width loosens the hand screw on the traverse (Fig. 4.2B).

Remember to tighten the hand screw again when the traverse is adjusted



Fig 4.2B

5. MAINTENANCE

5.1 Cleaning

Mobile Flex may be cleaned using a slightly damp cloth with a small quantity standard household cleaning agent.

Chemicals and other strong/abrasive agents must not be used.

5.2 Storage

Mobile Flex is intended for indoor use under normal temperatures (+2 - +40°) and relative humidity (40-90%).

If Mobile Flex is not used and is set to storage the height and width must be pushed together so Mobile Flex takes a minimum of space.

6. CHECK AND TROUBLE SHOOTING

6.1 Annual check

Mobile Flex should be inspected at least once a year in accordance with EN/ISO 10535, Annex B, which recommends that inspection should be carried out by a qualified person who is familiar with use of the Mobile Flex.

The legal owner of the product is responsible for ensuring that inspection is carried out. An inspection schedule can be requested from Winncare Nordic ApS.

If is necessary to replace any parts due to wear or damage these must be obtained/supplied by Winncare Nordic ApS.

6.2 Trouble Shooting

Fault:

The height adjustment does not work.	Possible cause: Solution:	The gas spring is defective. Replace with a new gas spring or contact Winncare Nordic ApS.
--------------------------------------	------------------------------	---

7. ENVIRONMENT AND QUALITY

The Mobile Flex has an expected life time of minimum 10 years under the proviso that all recommended service checks have been carried out and that the normal maintenance and care instructions have been followed.

7.1 Disposal

The product can be returned to Winncare Nordic ApS for disposal. When Mobile Flex is worn out it can be returned to Winncare Nordic ApS to be discarded in an environmentally correct way either through reuse or recycling.

7.2 Quality

Winncare Nordic ApS is certified according to the quality standards ISO 9001 and ISO 13485.

These certifications mean that the products and the company comply with the international standards for quality management, environmental management and standards for traceability of medical products.

Mobile Flex is classified as a Medical device class 1 product.

7.3 Symbols and abbreviations



Refer to the user manual

SWL

Safe working load = (user, Luna + sling)

8. ACCESSORIES

Item number
015-01999

Description
Multi coupling

Manufacturer:
WinnCare Nordic ApS
Taarnborgvej 12 C
4220 Korsøer
Denmark



Phone: +45 70 27 37 20
Fax: +45 70 27 37 19
Email: Info@winncare.dk
www.winncare.com

(EU) 2017/745 CLASS I
EN/ISO 10535:2007

UM-910-00763UK

