

# MANGAR ARCHIMEDES

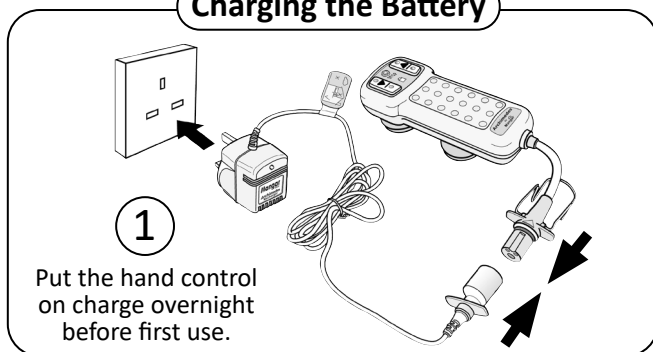
## QUICK START GUIDE



This Quick Start Guide is not intended to replace the full user instructions. Please read the full user instructions before using the Archimedes.

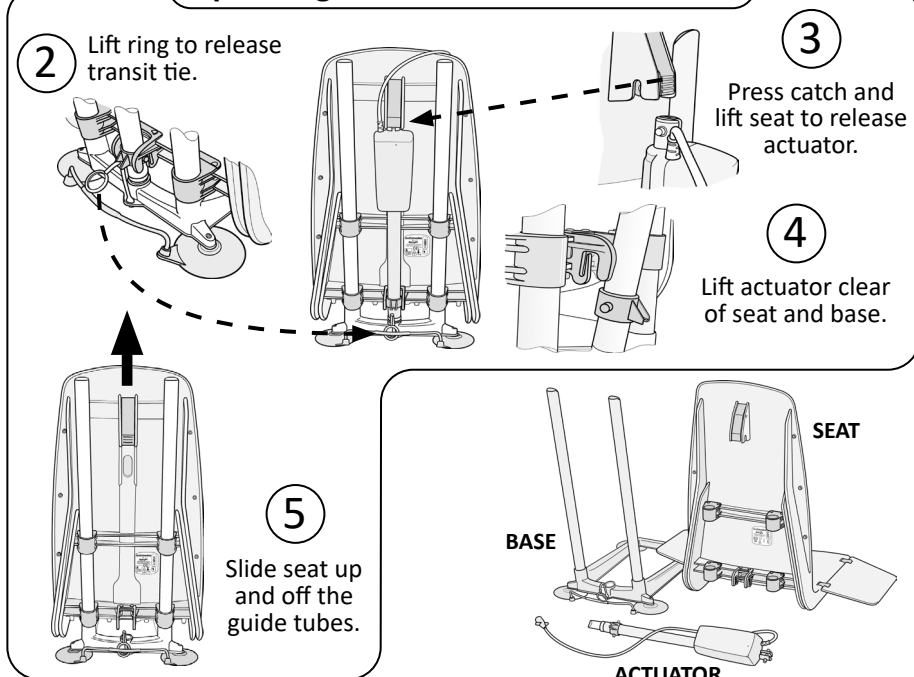


### Charging the Battery

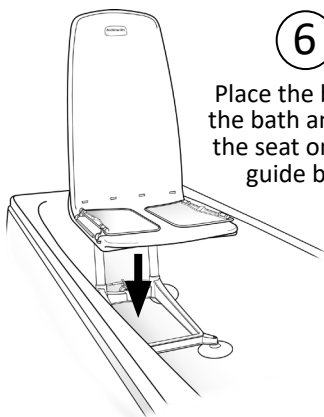


We recommend that the hand control is left continuously on charge when the Archimedes is not in use, as a matter of routine.

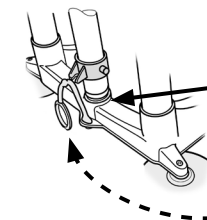
### Separating actuator and seat from base



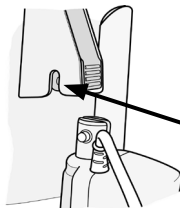
## Fitting the Archimedes in the bath



**6**  
Place the base in the bath and slide the seat onto the guide bars.



**7**  
Locate the actuator in the socket at the back of the base.  
**DO NOT** attach the transit tie.



**8**  
Locate the top end of the actuator into the slot in the latch ensuring that it 'clicks' into place.

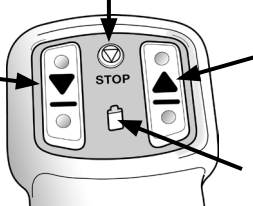
## Operating

**9**  
Connect the hand control to the actuator cable and fasten the clip.



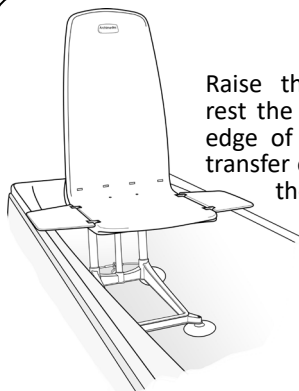
**10**  
Press the 'DOWN' button to lower the seat.

Emergency stop button.



Press the 'UP' button to raise the seat.

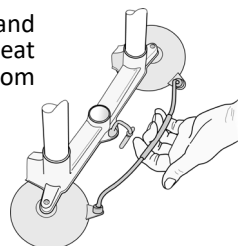
Battery Status Indicator.



**11**  
Raise the seat and rest the flaps on the edge of the bath to transfer on and off of the seat.

## Removing the Archimedes

**12**  
Lower the seat and remove the seat and actuator from the base.



**13**  
Remove the base by lifting the handle to release the rear suckers and then tilt the base forward using the guide bars to release the front suckers.

## Winnicare

Presteigne, Powys, Wales, LD8 2UF, UK

Tel: +44(0)1544 267674

Email: [enquiries@winnicare.uk](mailto:enquiries@winnicare.uk)

Web: [www.mangarhealth.com](http://www.mangarhealth.com)

MI0461 Issue 2

WIN  CARE